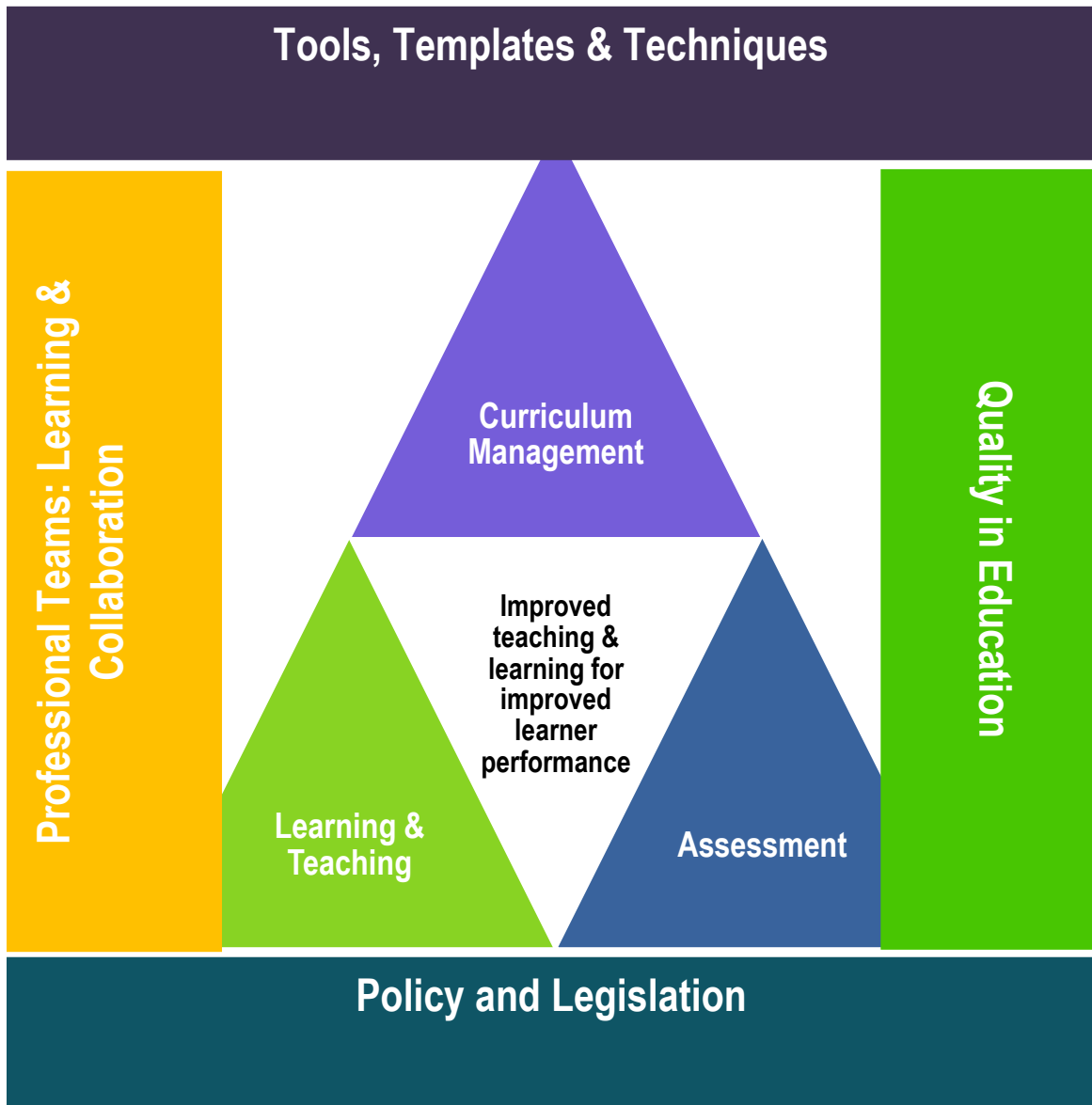
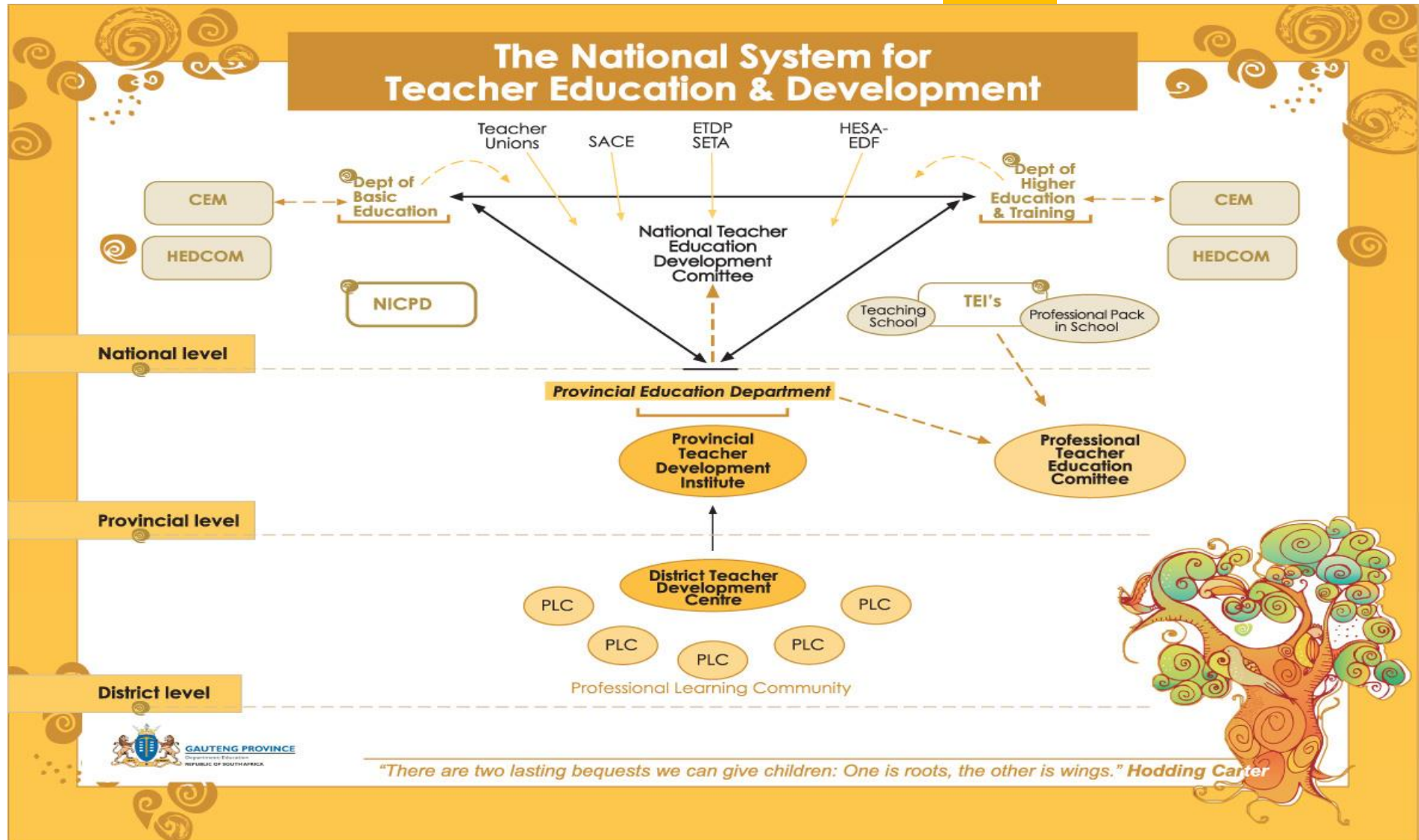


Professional Teams: Learning through collaboration

The following components make up the resource pack for Subject Facilitators and members of the Transversal Teams:

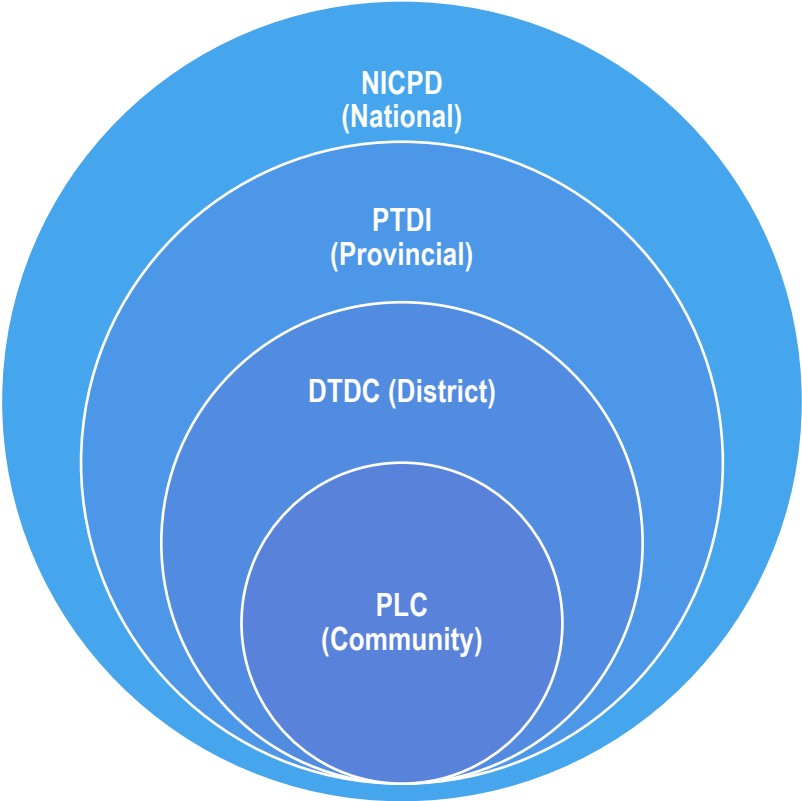




Professional Teams: Learning through collaboration

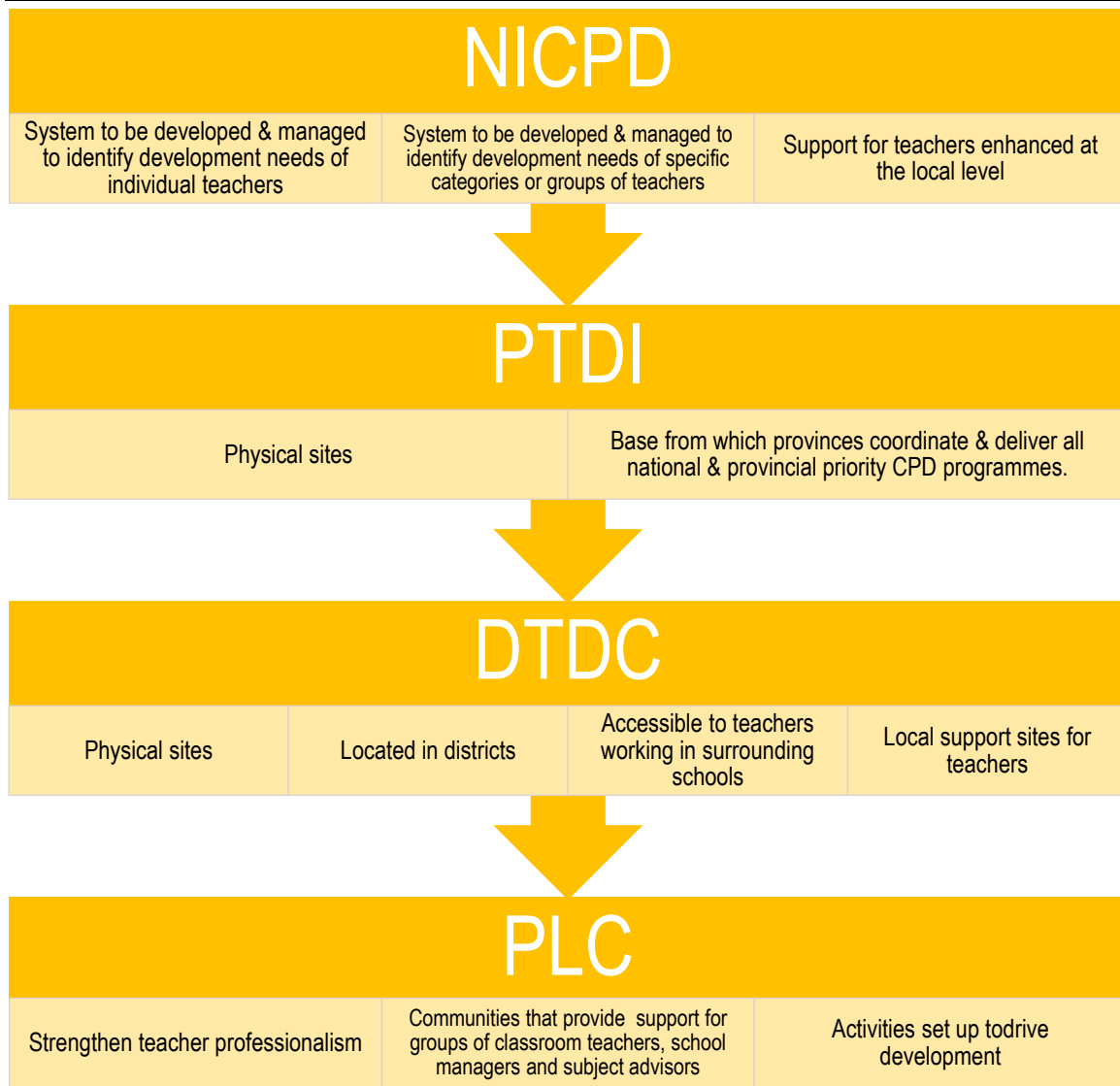
The place of Professional Learning Communities in the structure

Professional Learning Communities will fit into the structure as follows:



- NICPD** • *National Institute for Curriculum and Professional Development*
- PTDI** • *Provincial Teacher Development Institutes*
- DTDC** • *District Teacher Development Centres*
- PLC** • *Professional Learning Communities*

Professional Teams: Learning through collaboration



National System for Teacher Education and Development

The diagram that follows provides an overview of the national system for teacher education and development. The section that follows outlines the key deliverables for:

- National Institute for Curriculum and Professional Development (NICPD);
- Provincial Teachers Development Institutes (PTDIs);
- District Teacher Development Centres (DTDCs); and
- Professional Learning Communities (PLCs)

Professional Teams: Learning through collaboration

Deliverables

National Institute for Curriculum and Professional Development (NICPD)

- Develop and manage system of teacher development
- Focus: identify and address individual teachers, categories / groups of teachers needs

Provincial Teacher Development Institutes (PTDIs)

- Physical sites for delivery of national and provincial priority CPD programmes

District Teacher Development Centres (DTDCs)

- Physical site, located in districts.
- Provide local support for teachers; for delivery of professional development courses and meeting point for teacher PLCs.

Professional Learning Communities (PLCs)

- Provide support for groups of classroom teachers, school managers and subject advisors for developmental activities.

